
Protein Sequence Design in a Latent Space via Model-based Reinforcement Learning

Minji Lee¹, Luiz Felipe Vecchietti², Hyunkyu Jung^{1,2,3}, Hyunjoon Ro³, Meeyoung Cha^{2,1},
Ho Min Kim³

School of Computing¹

KAIST

Daejeon, South Korea

{haewon_lee,dino8egg}@kaist.ac.kr

Data Science Group²

Institute for Basic Science

Daejeon, South Korea

{lfelipesv,meeyoung.cha}@ibs.re.kr

Protein Communication Group³

Institute for Basic Science

Daejeon, South Korea

{nhj0229,hm_kim}@ibs.re.kr

Abstract

Proteins are complex molecules responsible for different functions in the human body. Enhancing the functionality of a protein and/or cellular fitness can significantly impact various industries. However, their optimization remains challenging, and sequences generated by data-driven methods often fail in wet lab experiments. This study investigates the limitations of existing model-based sequence design methods and presents a novel optimization framework that can efficiently traverse the latent representation space instead of the protein sequence space. Our framework generates proteins with higher functionality and cellular fitness by modeling the sequence design task as a Markov decision process and applying model-based reinforcement learning. We discuss the results in a comprehensive evaluation of two distinct proteins, GFP and His3.

1 Introduction

Proteins mediate the fundamental processes of cellular fitness and life. Iterated mutations on various proteins and natural selection during the biological evolution diversify traits, eventually accumulating beneficial phenotypes. Similarly, in protein engineering and design, the directed evolution of proteins has proved to be an effective strategy for improving or altering the proteins' functions or cellular fitness for industrial, research, and therapeutic applications (Yang et al., 2019; Huang et al., 2016). However, the protein sequence space of possible combinations of 20 amino acids is too large to search exhaustively in the laboratory, even with high-throughput screening (Huang et al., 2016). Directed evolution becomes trapped at local fitness maxima where library diversification is insufficient to cross *fitness valleys* and access neighboring fitness peaks. Moreover, functional sequences in this vast space of sequences are rare and overwhelmed by nonfunctional sequences.

To tackle the limitations, data-driven methods have been applied to protein sequence design. They used reinforcement learning (RL) (Angermueller et al., 2019), Bayesian optimization (Wu et al., 2017; Belanger et al., 2019; Terayama et al., 2021; Stanton et al., 2022), and generative models (Jain et al., 2022; Kumar & Levine, 2020; Hoffman et al., 2022) in a model-based fashion, *i.e.*, using a protein functionality predictor trained on experimental data to model the local landscape. Despite the

advances obtained by these methods, it is still challenging to generate optimized sequences that are experimentally validated. We suggest that the cause for this is two-fold. The first cause is that the optimization is usually performed by generating candidate sequences directly through amino acid substitutions (Belanger et al., 2019) or additions (Angermueller et al., 2019). Given the vast search space, these methodologies are computationally inefficient and commonly lead to the exploration of parts of the space with a low chance of having functional proteins. In designing biological sequences, previous literature explored optimizing a learned latent representation space (Gómez-Bombarelli et al., 2018; Stanton et al., 2022). Similarly, in this paper we investigate the optimization of sequences via RL directly in a latent representation space rather than in the protein sequence space.

The second cause is related to the models used as an oracle for optimization. These models are trained on experimental data obtained for a specific function, covering only a small portion of the protein space, and their accuracy is consequently restricted to this small region. Later, we will demonstrate that even the most advanced model-based optimizations can assign high functionality values for randomly generated protein sequences. These random sequences, however, are unlikely to be functional. To reduce false positives, we suggest augmenting the experimental data with random sequences (*i.e.*, negative examples) assigned to a low functionality value. Such augmentation also helps set boundaries around the experimental data distribution in which the oracle can be trusted.

We model protein sequence design as a Markov Decision Process (MDP) to optimize a latent representation. Our method trains the optimization policy using a model-based deep reinforcement learning (RL) framework (Fig. A). At each timestep, the policy updates the latent representation by small perturbations to maximize protein functionality, *i.e.*, *walking* uphill through the local landscape until the end of an episode. Results show that the proposed framework design sequences with higher protein functionality and cellular fitness than existing methods. Ablation studies show that, based on the evaluation of various model options for state and action for the RL framework, the proposed latent representation update can successfully optimize the protein and search the vast design space. Our method is general and can also be applied to representations learned from protein structures.

2 Methodology

2.1 Protein Representation Learning

Sequence Encoder Let $x \in \mathcal{X}$ be a (protein) sequence of length L , where L denotes the number of amino acids in the sequence and \mathcal{X} is the sequence space. Each element x_i of the sequence is a discrete number representing one of 20 amino acids, and i is the i -th element from x . Given x , the encoder network e produces a representation y of dimensions $(R,)$. The sequence encoder is divided into two parts: (i) a pre-trained protein language model encoder is used to obtain latent embeddings, (ii) a dimensionality reduction step is used to obtain the final representation.

In the first part, a pre-trained protein language model is leveraged (see Fig. 3(a)). We employ the ESM-2 model (Lin et al., 2022) trained on the Uniref50 dataset (Suzek et al., 2015). This model uses a BERT (Devlin et al., 2018) encoder and is trained with 150 million parameters in an unsupervised fashion (see Appendix A.1). ESM-2 is utilized to map mutation effects onto a latent space in our model. Given the sequence x as an input, ESM-2 outputs a matrix $q \in \mathcal{Q}$ of dimensions $(L + 2, E)$, where E is the dimension size of the embeddings, and \mathcal{Q} is the embedding space. In ESM-2, a CLS (classification) token is prepended to the sequence, and an EOS (end-of-sequence) token is appended to the sequence when generating the embeddings. They serve as sequence-beginning and sequence-ending characters, respectively.

In the second part, the output of the encoder with dimensions $(L + 2, E)$ is preprocessed before being passed to the policy. We use only the CLS token embedding to reduce the dimension from $(L + 2, E)$ to $(E,)$. However, this could still be large for the action space given the embedding dimension E of even the smallest ESM-2 model is 480. We hence use 1-dimensional adaptive average pooling to further reduce the dimension to $(R,)$ and obtain the final representation.

Sequence decoder Given a reduced representation y of size $(R,)$, we recover the amino acid sequence x using the sequence decoder d . The representation size is expanded to $(E,)$ using a linear layer. To recover the original $(L + 2, E)$ dimensions of the embeddings obtained by ESM-2, the dimensions of the reduced representation are first expanded. Then, this matrix is concatenated with the wild-type embeddings obtained using ESM-2 of the pre-trained encoder of size $(L + 2, 2E)$

followed by a linear layer. After passing to a dropout layer, the recovered representation is passed to the decoder’s language model head, which maps the representation back to the sequence space, *i.e.*, predicting each amino acid in the sequence from their associated embeddings. The output is the recovered sequence x .

2.2 Protein Functionality Prediction

The functionality predictor network depicted in Fig. 3(b) is trained as a downstream task of the pre-trained ESM-2 encoder network. Given an input sequence x , the encoder network produces a representation $q \in \mathcal{Q}$ of dimensions $(L + 2, E)$. We flatten the representation to a vector of size $((L + 2) \times E)$ that is passed to an architecture with two linear layers followed by GeLU (Hendrycks & Gimpel, 2016) non-linear activation. The final linear layer predicts a value $k \in \mathbb{R}$, where k is the functionality metric to be maximized and \mathbb{R} is the set of real numbers representing possible values for this metric. Functionality decoder $f(x)$ is assumed to be trained independently for each task. To train the functionality predictor, negative examples are included when sampling the training batch to prevent the model from assigning high values to sequences outside the experimental data distribution.

2.3 Protein Sequence Design via Model-based Reinforcement Learning

Consider a policy π that interacts with a fully observable environment during each episode. An episode is defined by the number of timesteps in which the policy takes actions to optimize the target sequence in the latent space. We sample an initial state $s_0 \in \mathcal{Q}$ from the representation space (state space) at the beginning of each episode. At each timestep t , the agent observes a state $s_t \in \mathcal{Q}$ and selects an action $a_t \in \mathcal{A}$ according to a stochastic policy $\pi : \mathcal{Q} \rightarrow \mathcal{A}$, where \mathcal{A} is the action space. The action a_t is defined as a perturbation in which a continuous value $a_{tj} \in [-\epsilon, \epsilon]$ is chosen for the j -th dimension, and ϵ is a hyperparameter that can be tuned based on the representation distribution of the experimental data. The hyperparameter ϵ controls how conservative the policy is when traversing the functionality or fitness landscape. Both s_t and a_t have R dimensions.

We model the environment using a Markov Decision Process (MDP) and assume that the next state s_{t+1} is conditioned only on the current state s_t and action a_t . This function calculates the element-wise sum of s_t and a_t so that $s_{t+1} = s_t + a_t$. As a result of performing the action a_t , the agent receives the reward r_t . The reward is a function $r_t = r(s_t, a_t)$, where r is the reward function $r : \mathcal{Q} \rightarrow \mathbb{R}$, and \mathbb{R} is the set of real numbers representing reward values. This data is later used to train the policy using an off-policy reinforcement learning algorithm. The agent interacts with the environment until reaching a terminal state, which is one of the followings: (i) when the last timestep T is reached; (ii) when $f(d(s_t))$ for the current state is greater than a hyperparameter threshold; and (iii) when s_t is in a part of the representation space \mathcal{Q} where $f(d(s_t))$ cannot be trusted. Condition (iii) states how far s_t is from the experimental data. Each timestep’s data is stored in a replay buffer as a 5-tuple $(s_t, a_t, s_{t+1}, r_t, m_t)$ where m_t identifies the terminal state.

Off-Policy Reinforcement Learning We further optimize the policy using Soft Actor Critic (SAC) (Haarnoja et al., 2018), an off-policy entropy-regularized reinforcement learning (RL) algorithm for continuous action spaces.

3 Results

3.1 Experiment Setup

Datasets We chose proteins of different lengths and functions for robustness in evaluation: the green fluorescent protein (GFP) and imidazoleglycerol-phosphate dehydratase (His3). The dataset proposed in (Sarkisyan et al., 2016) is used to train the GFP encoder-decoder and its functionality predictor. The dataset contains 54,025 mutant sequences, with log-fluorescence intensity associated. The length L of protein sequences is 237. For the His3 protein, we used the dataset in (Pokusaeva et al., 2019) that consists of mutant sequences of its evolutionarily-relevant segments and is associated with its growth rate. We processed the data to 50,000 sequences with the length of $L = 30$.

Oracles We train two separate oracles for each dataset to prevent the circular use of the functionality predictor: one is exclusively used for optimization (which we call *optimization oracle*), and another

is used to calculate the performance metric in experiments (which we call *evaluation oracle*). We follow the guideline presented in Kolli et al. (2022) that proposes the use of multiple oracles with different numbers of layers, activation functions, and hyperparameters to improve the reliability of the optimization process. We describe the experiment details and the comparison of evaluation and optimization oracles’ performance in Appendices A.2 and A.9.

Evaluation Metrics We use three evaluation metrics as reported in Jain et al. (2022): performance, novelty, and diversity. We also consider two additional metrics for robustness: the originality of optimized sequences, named as *original*, i.e. sequences not contained in the training dataset, and the distance between the optimized sequence and wild-type, named as *dist(WT)*. See Appendix A.4 for the details in evaluation metrics. When testing the protein functionality of GFP, we include the presence of the chromophore residues in the optimized sequence, as these residues emit fluorescence. We generate 100 sequences for each method, and the 10 highest-performing sequences are evaluated.

3.2 Experiment

Table 1: Results obtained for GFP sequence design. Random-1 and Random-5 indicates random mutations in 1 and 5 positions, respectively. Random-P indicates a random perturbation in the latent representation. Standard deviation for Novelty and dist(WT) are shown in Table 8.

Model	Performance	Novelty	Original	dist(WT)	Diversity	Chromophore
Ours	3.491 \pm 0.352	8.451	100%	7.700	6.311	100%
Directed evolution	3.287 \pm 0.237	7.704	-	6.849	4.858	100%
CbAS	3.155 \pm 0.153	7.712	80%	6.900	1.956	100%
Random-1	2.824 \pm 0.100	6.611	80%	7.186	7.716	100%
Random-5	2.280 \pm 0.275	13.91	100%	9.950	12.37	90%
Random-P	1.511 \pm 0.797	14.71	100%	14.15	14.62	100%
BO	0.581 \pm 0.095	36.96	100%	36.70	6.867	100%
DynaPPO	0.004 \pm 0.003	218.9	100%	219.3	224.1	0%
GFlowNet	0.000 \pm 0.002	199.4	100%	200.1	12.53	0%

GFP Sequence Design The results obtained for GFP sequence design are described in Table 1. We compare with four optimization methods: CbAS (adaptive sampling) (Brookes et al., 2019), BO (bayesian optimization) (Swersky et al., 2020), GFlowNet (generative model) (Jain et al., 2022), and DynaPPO (reinforcement learning) (Angermueller et al., 2019). The term directed evolution refers to the average functionality values of initial states used in the optimization process. We also include random mutations of initial states. It is seen in Table 1 that the proposed method outperforms directed evolution. Only the proposed method and CbAS optimize GFP effectively, whereas BO, GFlowNet, and DynaPPO achieve low performance. It was interesting to observe that two of the GFP sequences optimized by the proposed method achieved higher predicted functionality values, 3.9705 and 3.8059, when compared to the experimental wild-type functionality value, 3.72.

Table 2: Results obtained for His3 sequence design. Standard deviation for Novelty and dist(WT) are shown in Table 9.

Model	Performance	Novelty	Original	dist(WT)	Diversity
Ours	0.945 \pm 0.091	8.361	60%	10.95	3.521
CbAS	0.749 \pm 0.157	7.287	90%	4.700	2.356
Random-1	0.858 \pm 0.058	7.372	80%	7.350	7.716
Random-5	0.678 \pm 0.096	9.777	100%	8.950	12.37
Directed evolution	0.616 \pm 0.110	6.889	-	6.710	6.942
DynaPPO	-0.201 \pm 0.142	27.41	100%	26.70	27.47
BO	-0.313 \pm 0.065	26.17	100%	27.50	4.756

His3 Sequence Design Table 2 displays the results for His3, where our framework achieves the best performance. DynaPPO and BO were unable to optimize His3 effectively. The proposed method achieves higher novelty and diversity when compared to CbAS.

3.3 Ablation studies

State and Action Modeling Table 3 shows how state and action modeling influence sequence design in GFP. We examine two types: one-hot encoding of amino acid sequence and a latent vector

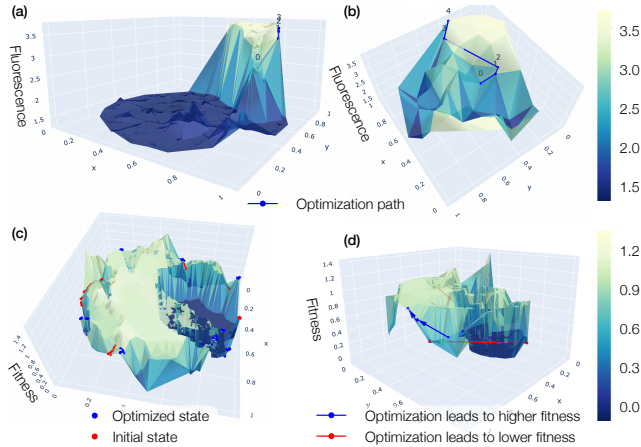


Figure 1: (a) and (b) Optimization done by the trained policy during a single episode for the GFP. The z-axis represents the intensity of log fluorescence. (c) Fitness landscape for the His3 dataset. (d) Optimization performed by the trained policy for the His3 task. See Appendix A.11 for details.

which is an output of the encoder. We investigate three types of action: (i) multi discrete sequence generation, (ii) autoregressive addition of amino acids (Angermueller et al., 2019), and (iii) the proposed perturbation in the latent vector. Only the latent vector as the state and the perturbation as the action can optimize GFP and His3 tasks.

Table 3: Comparison on the performance by the state and action modeling. For rows with the action defined as a mutation in the protein sequence, we train the policy using Proximal Policy Optimization (PPO) (Schulman et al., 2017) to handle the multiple discrete action space. More details regarding the state and action modeling for this ablation are presented in Appendix A.5.

State	Action	GFP	His3
Latent vector	Perturbation on latent vector	3.491 ± 0.352	0.945 ± 0.091
Directed evolution		3.287 ± 0.237	0.616 ± 0.110
Sequence	Generate sequence	0.006 ± 0.004	-0.148 ± 0.043
Latent vector	Generate sequence	0.005 ± 0.003	-0.139 ± 0.144
Sequence	Amino acid addition	0.004 ± 0.003	-0.201 ± 0.142

Representation Analysis We analyzed the influence of the optimization method on the latent vector as an input. Our method, which employs RL for taking actions, is compared to random perturbation and to the Swersky et al. (2020), both of which take a latent vector as input. First, Swersky et al. (2020) performs better when using the latent vector input than when using the sequence as input. It implies that the latent vector provides rich information in a low-dimensional space that is easier to optimize than the sequence space. Even with the same representation, our method outperforms Swersky et al. (2020) while achieving competitive novelty.

Table 4: Comparison on our method and BO when using latent representation as an input.

Model	Performance	Novelty	Diversity	Chromophore
Ours	3.491 ± 0.352	8.451 ± 2.05	6.311	100%
Directed evolution	3.287 ± 0.237	7.704 ± 2.66	4.858	100%
Swersky et al. (2020) on latent space	2.601 ± 0.912	8.077 ± 2.58	6.600	100%
Random perturbation	1.511 ± 0.797	14.71 ± 5.90	14.616	100%

How the trained policy traverses the functionality landscape We analyze our trained policy traversing the local landscape. Figs. 1 (a) and (b) visualize the optimization trajectory during one episode of GFP, indicating continued improvement of the fluorescence level. This demonstrates that the model can successfully *climb up* the local landscape throughout the episode. The policy can also traverse local optima thanks to the MDP formulation (See Appendix A.13).

References

- Christof Angermueller, David Dohan, David Belanger, Ramya Deshpande, Kevin Murphy, and Lucy Colwell. Model-based reinforcement learning for biological sequence design. In *International conference on learning representations*, 2019.
- David Belanger, Suhani Vora, Zelda Mariet, Ramya Deshpande, David Dohan, Christof Angermueller, Kevin Murphy, Olivier Chapelle, and Lucy Colwell. Biological sequences design using batched bayesian optimization. 2019.
- David Brookes, Hahnbeom Park, and Jennifer Listgarten. Conditioning by adaptive sampling for robust design. In *International conference on machine learning*, pp. 773–782. PMLR, 2019.
- Jacob Devlin, Ming-Wei Chang, Kenton Lee, and Kristina Toutanova. Bert: Pre-training of deep bidirectional transformers for language understanding. *arXiv preprint arXiv:1810.04805*, 2018.
- Karl Pearson F.R.S. Liii. on lines and planes of closest fit to systems of points in space. *The London, Edinburgh, and Dublin Philosophical Magazine and Journal of Science*, 2(11):559–572, 1901. doi: 10.1080/14786440109462720.
- Rafael Gómez-Bombarelli, Jennifer N Wei, David Duvenaud, José Miguel Hernández-Lobato, Benjamín Sánchez-Lengeling, Dennis Sheberla, Jorge Aguilera-Iparraguirre, Timothy D Hirzel, Ryan P Adams, and Alán Aspuru-Guzik. Automatic chemical design using a data-driven continuous representation of molecules. *ACS central science*, 4(2):268–276, 2018.
- Tuomas Haarnoja, Aurick Zhou, Kristian Hartikainen, George Tucker, Sehoon Ha, Jie Tan, Vikash Kumar, Henry Zhu, Abhishek Gupta, Pieter Abbeel, et al. Soft actor-critic algorithms and applications. *arXiv preprint arXiv:1812.05905*, 2018.
- Dan Hendrycks and Kevin Gimpel. Gaussian error linear units (gelus). *arXiv preprint arXiv:1606.08415*, 2016.
- Samuel C Hoffman, Vijil Chenthamarakshan, Kahini Wadhawan, Pin-Yu Chen, and Payel Das. Optimizing molecules using efficient queries from property evaluations. *Nature Machine Intelligence*, 4(1):21–31, 2022.
- Po-Ssu Huang, Scott E Boyken, and David Baker. The coming of age of de novo protein design. *Nature*, 537(7620):320–327, 2016.
- Moksh Jain, Emmanuel Bengio, Alex Hernandez-Garcia, Jarrid Rector-Brooks, Bonaventure FP Dossou, Chanakya Ajit Ekbote, Jie Fu, Tianyu Zhang, Michael Kilgour, Dinghuai Zhang, et al. Biological sequence design with gflownets. In *International Conference on Machine Learning*, pp. 9786–9801. PMLR, 2022.
- John Jumper, Richard Evans, Alexander Pritzel, Tim Green, Michael Figurnov, Olaf Ronneberger, Kathryn Tunyasuvunakool, Russ Bates, Augustin Žídek, Anna Potapenko, et al. Highly accurate protein structure prediction with alphafold. *Nature*, 596(7873):583–589, 2021.
- Diederik P Kingma and Jimmy Ba. Adam: A method for stochastic optimization. *arXiv preprint arXiv:1412.6980*, 2014.
- Sathvik Kolli, Amy X Lu, Xinyang Geng, Aviral Kumar, and Sergey Levine. Data-driven optimization for protein design: Workflows, algorithms and metrics. In *ICLR2022 Machine Learning for Drug Discovery*, 2022.
- Aviral Kumar and Sergey Levine. Model inversion networks for model-based optimization. *Advances in Neural Information Processing Systems*, 33:5126–5137, 2020.
- Zeming Lin, Halil Akin, Roshan Rao, Brian Hie, Zhongkai Zhu, Wenting Lu, Allan dos Santos Costa, Maryam Fazel-Zarandi, Tom Sercu, Sal Candido, et al. Language models of protein sequences at the scale of evolution enable accurate structure prediction. *bioRxiv*, 2022.

- Victoria O Pokusaeva, Dinara R Usmanova, Ekaterina V Putintseva, Lorena Espinar, Karen S Sarkisyan, Alexander S Mishin, Natalya S Bogatyreva, Dmitry N Ivankov, Arseniy V Akopyan, Sergey Ya Avvakumov, et al. An experimental assay of the interactions of amino acids from orthologous sequences shaping a complex fitness landscape. *PLoS genetics*, 15(4):e1008079, 2019.
- Alexander Rives, Joshua Meier, Tom Sercu, Siddharth Goyal, Zeming Lin, Jason Liu, Demi Guo, Myle Ott, C Lawrence Zitnick, Jerry Ma, et al. Biological structure and function emerge from scaling unsupervised learning to 250 million protein sequences. *Proceedings of the National Academy of Sciences*, 118(15):e2016239118, 2021.
- Karen S Sarkisyan, Dmitry A Bolotin, Margarita V Meer, Dinara R Usmanova, Alexander S Mishin, George V Sharonov, Dmitry N Ivankov, Nina G Bozhanova, Mikhail S Baranov, Onuralp Soylemez, et al. Local fitness landscape of the green fluorescent protein. *Nature*, 533(7603):397–401, 2016.
- John Schulman, Filip Wolski, Prafulla Dhariwal, Alec Radford, and Oleg Klimov. Proximal policy optimization algorithms. *arXiv preprint arXiv:1707.06347*, 2017.
- Sam Sinai, Richard Wang, Alexander Whatley, Stewart Slocum, Elina Locane, and Eric D Kelsic. Adalead: A simple and robust adaptive greedy search algorithm for sequence design. *arXiv preprint arXiv:2010.02141*, 2020.
- Samuel Stanton, Wesley Maddox, Nate Gruver, Phillip Maffettone, Emily Delaney, Peyton Greenside, and Andrew Gordon Wilson. Accelerating bayesian optimization for biological sequence design with denoising autoencoders. *arXiv preprint arXiv:2203.12742*, 2022.
- Baris E Suzek, Yuqi Wang, Hongzhan Huang, Peter B McGarvey, Cathy H Wu, and UniProt Consortium. Uniref clusters: a comprehensive and scalable alternative for improving sequence similarity searches. *Bioinformatics*, 31(6):926–932, 2015.
- Kevin Swersky, Yulia Rubanova, David Dohan, and Kevin Murphy. Amortized bayesian optimization over discrete spaces. In *Conference on Uncertainty in Artificial Intelligence*, pp. 769–778. PMLR, 2020.
- Kei Terayama, Masato Sumita, Ryo Tamura, and Koji Tsuda. Black-box optimization for automated discovery. *Accounts of Chemical Research*, 54(6):1334–1346, 2021.
- Laurens Van der Maaten and Geoffrey Hinton. Visualizing data using t-sne. *Journal of machine learning research*, 9(11), 2008.
- Jian Wu, Matthias Poloczek, Andrew G Wilson, and Peter Frazier. Bayesian optimization with gradients. *Advances in neural information processing systems*, 30, 2017.
- Kevin K Yang, Zachary Wu, and Frances H Arnold. Machine-learning-guided directed evolution for protein engineering. *Nature methods*, 16(8):687–694, 2019.

A Appendix

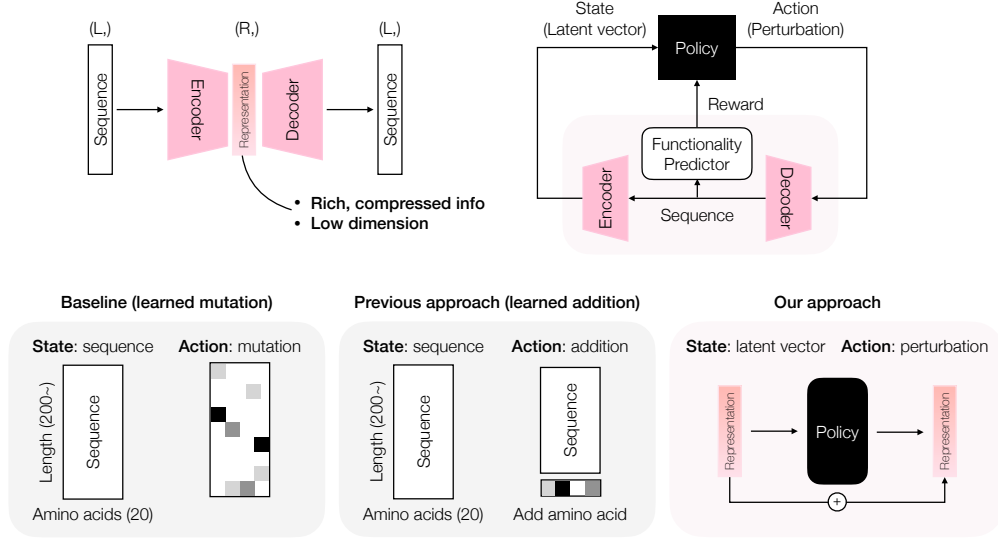


Figure 2: The framework’s overview describes (top left) the encoder-decoder architecture trained to represent protein sequences in a latent space and (top right) the RL framework. The state is defined as the representation in the latent space, while the action is the perturbation in this representation. The perturbed representation is decoded back to a protein sequence using a sequence decoder. The reward is based on the functionality predicted by the functionality predictor (oracle). Bottom row shows three RL-based state and action modeling options.

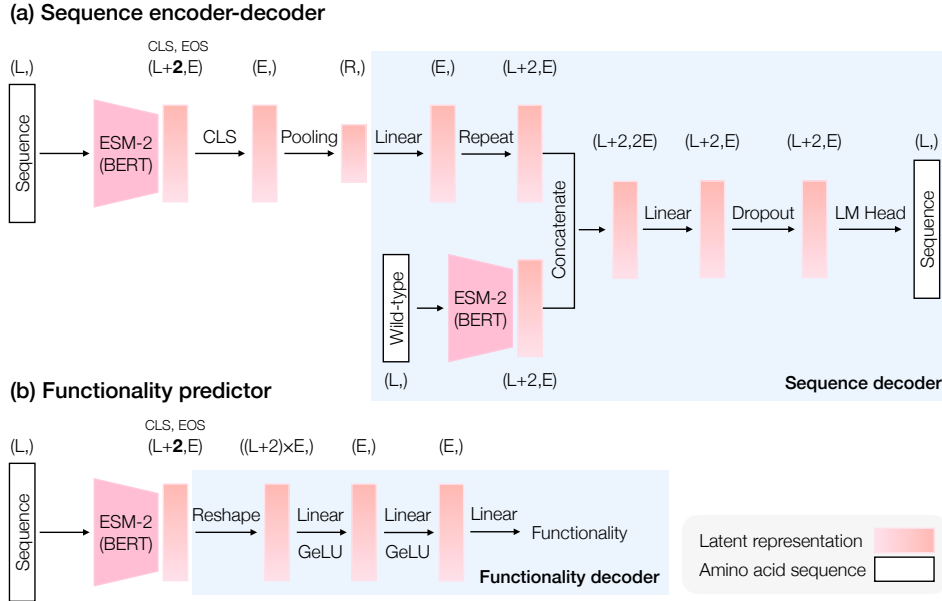


Figure 3: Model Architecture

A.1 Sequence Encoder-Decoder

Next, we give more information regarding the architecture and the training process of the sequence encoder-decoder. The model architecture is seen in 3(a). The ESM-2 encoder comprises a token embedding layer and 30 transformer layers. Each transformer layer consists of multi-head attention

followed by a layer normalization layer and two fully connected layers with GeLU (Hendrycks & Gimpel, 2016) non-linear activation. Language model head comprises of linear layer followed with GeLU activation and the linear layer using the weight of the embedding layer in the encoder. The number of attention heads is set to 20. We used the pre-trained weights provided in (Lin et al., 2022). The ESM-2 encoder weights are not updated during the fine-tuning process. The sequence encoder-decoder is fine-tuned using a masked language model objective. We define the loss function as the mean of cross entropy loss on mutated positions and the mean cross-entropy loss on non-mutated positions to ensure that the decoder also focuses on recovering mutated positions. Since we provide the wild-type representation during sequence recovery and mutants in the GFP dataset have a maximum of 15 mutations, such a loss function is important to prevent the decoder from predicting every sequence as the wild-type. We train the model to the train set of each dataset for 16 epochs using the Adam optimizer (Kingma & Ba, 2014). The initial learning rate of Adam is set to $8e-5$, with weight decay set to $1e-5$. The learning rate is reduced by $0.8\times$ every epoch. Table 5 shows the performance of a sequence decoder by the chosen embedding size of R .

Table 5: Performance of the sequence decoder for GFP and His3.

Dataset	Embedding size	Top-1 Accuracy	
		Mutated positions	Non-mutated positions
GFP	8	0.463	0.9958
	32	0.4762	0.9903
His3	8	0.6439	0.8407
	32	0.8194	0.9022

A.2 Functionality predictor

Functionality and fitness predictors for GFP and His3 are also based on the pre-trained ESM-2 protein language model. The ESM-2 encoder has same architecture as described in Appendix A.1, and the decoder is described in Sec. 2. We fine-tuned the predictor on the train set of each dataset for 16 epochs using the Adam (Kingma & Ba, 2014) optimizer with the initial learning rate set to $8e-5$ and weight decay set to $1e-5$. The ESM-2 encoder weights are not updated during the fine-tuning process. The negative samples for GFP and His3 are associated with a functionality/fitness value of 0. The GFP value of 0 denotes an extremely low fluorescence level ($10^{(0-3.72)} = 0.0002$ times the brightness of the wild type protein). The His3 value of 0 denotes the minimum fitness value in the dataset, ranging from $[0, 1.63]$. We used the mean squared error between empirically obtained log-fluorescence intensity and predicted fluorescence as the loss function for GFP and the empirically obtained fitness and predicted fitness as the loss function for His3.

A.2.1 Optimization oracle

In Table 6 we report the test Spearman’s ρ and mean squared error (MSE) of the optimization oracle used for model-based optimization.

Table 6: Performance of the optimization oracle for GFP and His3

Task	Test set		Negative test set
	Spearman’s ρ	MSE	MSE
GFP	0.8426	0.1436	2.930e-6
His3	0.6635	0.0080	0.0164

A.2.2 Evaluation oracle

In Table 7 we report the test Spearman’s ρ and mean squared error (MSE) of the evaluation oracle used for model-based optimization. Compared to the optimization oracle, the evaluation oracle utilize a different pre-trained ESM-2 model which also contains a different number of parameters. The evaluation oracle and optimization oracle are trained with similar methodology.

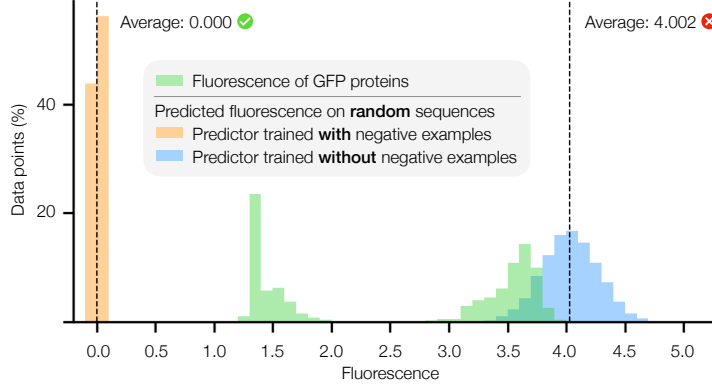


Figure 4: The predicted fluorescence of random sequences tested using a functionality predictor trained **with** or **without** negative examples.

Table 7: Performance of the evaluation oracle for GFP and His3

Task	Test set		Negative test set
	Spearman’s ρ	MSE	MSE
GFP	0.8320	0.4359	6.247e-05
His3	0.6820	0.0110	0.0288

A.3 Training Functionality Predictor with Negative Examples

We trained the GFP functionality predictor with the original training dataset and the training dataset augmented with 40,000 negative examples (*i.e.*, 82% of the size of the original training dataset). The model architecture and training are detailed in Appendix A.2. We tested both predictors with 10,000 negative examples that were not seen during training. Fig. 4 shows that the functionality predictor trained without negative examples incorrectly predicts a high value for non-functional sequences (mean=4.002), whereas the one trained with negative examples accurately assigns zero functionality (mean=0.0) to random non-functional sequences.

A.3.1 Training CbAS and DynaPPO with and without negative samples

We conducted an ablation study by training two baseline optimization methods, CbAS and DynaPPO, using both functionality predictors. The optimized sequences are then visualized using predicted structures obtained by AlphaFold2. As shown in Fig. 5, CbAS managed to propose a valid fluorescent protein when guided by an oracle trained with negative examples but failed when guided by an oracle trained without negative examples. Even though the structure predicted for the CbAS model for this case seems unstable, the oracle trained without negative examples assigned a very high log-fluorescence intensity value (4.014) for the sequence. Therefore, we argue that biological sequence design should be guided and evaluated by an oracle trained with an experimental dataset augmented with negative examples.

A.4 Evaluation metrics

This section provides the details in evaluation metrics. The performance evaluation metric is calculated as the mean predicted functionality from the top K generated sequences. The predicted functionality is obtained by using the evaluation oracle. Let the generated sequences be contained in the following set $\mathcal{G}^* = \{g_1^*, \dots, g_K^*\}$, performance is defined as $\frac{1}{K} \sum_i f(g_i^*)$. The novelty evaluation metric is defined to assess if the policy is generating sequences similar to the ones contained in the experimental data. Defining \mathcal{P} as the experimental data set containing the wild-type protein sequence, novelty is

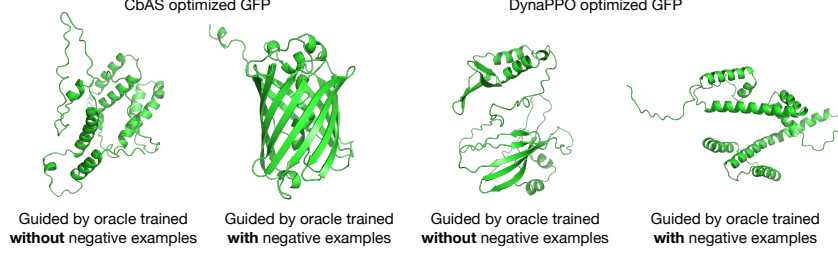


Figure 5: The structure of optimized sequences without and with negative examples.

given as follows:

$$\frac{1}{K \cdot |\mathcal{P}|} \sum_{g_i^* \in \mathcal{G}^*} \sum_{p_j \in \mathcal{P}} \text{dist}(g_i^*, p_j), \quad (1)$$

where dist is defined as the number of different amino acids of two sequences. The diversity evaluation metric is defined as the mean of the number of amino acids that are different among the optimized sequences and is defined as:

$$\frac{1}{K(K-1)} \sum_{g_i^* \in \mathcal{G}^*} \sum_{g_j^* \in \mathcal{G}^* - \{g_i^*\}} \text{dist}(g_i^*, g_j^*). \quad (2)$$

The original metric is defined as $\frac{1}{K} \sum_i 1([g_i^* \notin \mathcal{P}])$ and the distance from wild-type (WT) metric is given as $\frac{1}{K} \sum_{g_i^* \in \mathcal{G}^*} \text{dist}(w, g_i^*)$, where w is the wild-type sequence.

A.5 Soft Actor Critic (SAC)

Off-policy is a type of RL learning that learns to optimize independently of the agent’s actions. SAC is trained to maximize future rewards and entropy to promote randomness in action space exploration. An optimal policy π^* following this objective is given as

$$\pi^* = \arg \max_{\pi} \mathbb{E}_{\pi} \left[\sum_{t=0}^{\infty} \gamma^t (r(s_t, a_t) + \alpha H(\pi(\cdot|s_t))) \right], \quad (3)$$

where $\gamma \in [0, 1]$ is a discount factor, α is a temperature hyperparameter and H is entropy.

Following a policy π the Q function or action-value function is defined as

$$Q^{\pi}(s, a) = \mathbb{E}_{\pi} \left[\sum_{t=0}^{\infty} \gamma^t r(s_t, a_t) + \alpha \sum_{t=1}^{\infty} \gamma^t H(\pi(\cdot|s_t)) \right], \quad (4)$$

where the entropy is added from the first timestep. The Bellman equation for Q^{π} at a timestep t is given by

$$Q^{\pi}(s_t, a_t) = \mathbb{E}_{\pi} [r(s_t, a_t) + \gamma(Q^{\pi}(s_{t+1}, \tilde{a}_{t+1}) + \alpha H(\pi(\cdot|s_{t+1})))] , \quad (5)$$

in which the state s_{t+1} is used from the replay buffer and \tilde{a}_{t+1} is sampled from the current policy. During training, SAC models three networks: a policy π_{θ} and two Q-functions $Q_{\phi 1}$ and $Q_{\phi 2}$. The two Q functions are due to the clipped double-Q trick, more details can be found in Haarnoja et al. (2018). The loss functions to train $Q_{\phi 1}$ and $Q_{\phi 2}$ in SAC are defined as

$$L(\phi_i, \mathcal{D}) = \mathbb{E}_{(s_t, a_t, r_t, s_{t+1}, d_t) \sim \mathcal{D}} \left[(Q_{\phi_i}(s_t, a_t) - y(r_t, s_{t+1}, d_t))^2 \right], \quad (6)$$

where the target $y(r_t, s_{t+1}, d_t)$, substituting the entropy function, is given by

$$y(r_t, s_{t+1}, d_t) = r_t + \gamma(1 - d_t) \left(\min_{j=1,2} Q_{\phi_{\text{target},j}}(s_{t+1}, \tilde{a}_{t+1}) - \alpha \log \pi_{\theta}(\tilde{a}_{t+1}|s_{t+1}) \right), \quad (7)$$

where $\tilde{a}_{t+1} \sim \pi_\theta(\cdot|s_{t+1})$. The policy π_θ is trained to maximize the value function of state s_t . The value function V^π is as follows

$$V^\pi(s_t) = \mathbb{E}_{a_t \sim \pi} [Q^\pi(s_t, a_t) - \alpha \log \pi(a_t|s_t)]. \quad (8)$$

The policy is reparameterized and then optimized following Haarnoja et al. (2018). Using a squashing Gaussian function, sampling the action is finally defined as

$$\tilde{a}_{t\theta}(s_t, \xi) = \tanh(\mu_\theta(s_t) + \sigma_\theta(s_t) \odot \xi), \quad \xi \sim \mathcal{N}(0, I). \quad (9)$$

A.6 Implementation details

Policy The magnitude of the perturbation ϵ applied to each element of the action vector is set to 0.1. The episode length T is set to 20 for GFP and 10 for His3.

Soft Actor-Critic (SAC) We used three fully connected layers with a hidden size set to 256 for both the actor and critic networks of SAC. The Adam optimizer Kingma & Ba (2014) is used for both actor and critic networks. The entropy temperature α is automatically tuned during training following Haarnoja et al. (2018).

Proximal Policy Optimization (PPO) For the ablation studies in Table 3 using the mutation in the protein sequence as output, we use Proximal Policy Optimization (PPO) Schulman et al. (2017) to handle the discrete action space setting. The PPO architecture is similar to the one used for the actor of SAC, using three fully connected layers with a hidden size set to 256. We define the action as a multiple of discrete actions for the third and fifth row in Table 3.

Random Perturbation Baseline We added a random value between $[-1, 1]$ to the initial state representation to test the effect of random perturbations on performance. Then, we decoded the sequence using the decoder and predicted the functionality using the functionality predictor presented in. Note that the baseline and random performance reported in the Tables 1 and 2 are also calculated on the top K candidates.

Previous methods For the comparison with previous baseline methods, we use the FLEXS implementation (Sinai et al., 2020) of DynaPPO, CbAS, and BO. All the models are trained for ten rounds. During training, we observed the performance saturation after the first few rounds. The sequences proposed in the last round are used to evaluate the baseline models. For DynaPPO, its ensemble model is trained for ten rounds, and the environment batch size is set to 10. For CbAS, a CNN architecture with a hidden size equal to 100 and a number of channels equal to 32 is used. Also, the generator block of CbAS is trained for ten epochs.

A.7 Initial States of the optimization Process

We selected initial states for the optimization process in our framework according to two criteria: (i) sequences with room to improve, (ii) sequences sampled from regions that we can trust the oracle. Since the distribution for the ground truth functionality of GFP is bimodal, we sampled two sets of initial states from each mode, low initial states, and high initial states. For His3, only one set of initial states is chosen. As shown in Fig. 6, we sample the sequences from pre-determined regions that do not include the most functional mutants. Additionally, the sequences are sampled from examples in which the difference between their ground truth and predicted functionality or fitness is less than a threshold set to 0.1.

A.8 Evaluation on GFP and His3 design

In this section, along with the results presented in Tables 1 and 2 we report results on GFP and His3 on Novelty and dist(WT) with standard deviation.

A.9 Comparison of evaluation and optimization oracle

In Tables 10 and 11, we compare results on GFP and His3 design using evaluation oracle and optimization oracle. It is shown that, for all methods, a decrease in performance using the evaluation oracle is observed. This decline was particularly pronounced for BO (Swersky et al., 2020). It is also observed that the standard deviation of the results increases when using the evaluation oracle.

Table 8: Results obtained for GFP sequence design. Random-1 and Random-5 indicates random mutations in 1 and 5 positions, respectively. Random-P indicates a random perturbation in the latent representation.

Model	Novelty	dist(WT)
Ours	8.451 ± 2.05	7.700 ± 0.78
Directed evolution	7.704 ± 2.66	6.849 ± 1.90
CbAS	7.712 ± 2.05	6.900 ± 0.83
Random-1	6.611 ± 1.02	7.186 ± 2.03
Random-5	13.91 ± 1.22	9.950 ± 0.87
Random-P	14.71 ± 5.90	14.15 ± 5.76
BO	36.96 ± 5.51	36.70 ± 5.31
DynaPPO	218.9 ± 2.63	219.3 ± 2.37
GFlowNet	199.4 ± 2.00	200.1 ± 1.87

Table 9: Results obtained for His3 sequence design. Random-1 and Random-5 indicates random mutations in 1 and 5 positions, respectively.

Model	Novelty	dist(WT)
Ours	8.361 ± 2.01	10.95 ± 1.32
CbAS	7.287 ± 1.57	4.700 ± 0.64
Random-1	7.372 ± 1.56	7.350 ± 1.39
Random-5	9.777 ± 1.63	8.950 ± 1.36
Directed evolution	6.889 ± 1.57	6.710 ± 1.57
DynaPPO	27.41 ± 1.12	26.70 ± 1.19
BO	26.17 ± 1.03	27.50 ± 0.50

Table 10: Comparison of the results obtained for GFP sequence design using evaluation and optimization oracle.

Model	Evaluation oracle	Optimization oracle
Ours	3.491 ± 0.352	3.531 ± 0.06
Directed evolution	3.287 ± 0.237	3.370 ± 0.013
CbAS (Brookes et al., 2019)	3.155 ± 0.153	3.328 ± 0.044
Random mutation (N=1)	2.824 ± 0.100	3.410 ± 0.094
Random mutations (N=5)	2.280 ± 0.275	2.354 ± 0.522
Random perturbation	1.511 ± 0.797	1.973 ± 0.832
BO (Swersky et al., 2020)	0.581 ± 0.095	1.231 ± 0.034
DynaPPO (Angermueller et al., 2019)	0.004 ± 0.003	0.014 ± 0.001
GFlowNet (Jain et al., 2022)	0.000 ± 0.002	0.017 ± 0.000

Table 11: Comparison of the results obtained for His3 sequence design using evaluation and optimization oracle.

Model	Evaluation oracle	Optimization oracle
Ours	0.945 ± 0.091	0.961 ± 0.050
CbAS (Brookes et al., 2019)	0.749 ± 0.157	0.889 ± 0.092
Random mutation (N=1)	0.858 ± 0.058	0.856 ± 0.070
Directed evolution	0.616 ± 0.110	0.756 ± 0.013
Random mutations (N=5)	0.678 ± 0.096	0.518 ± 0.184
DynaPPO (Angermueller et al., 2019)	-0.201 ± 0.142	-0.067 ± 0.053
BO (Swersky et al., 2020)	-0.313 ± 0.065	-0.089 ± 0.029

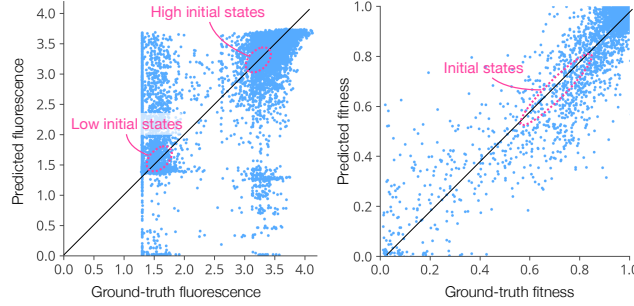


Figure 6: Ground truth and predicted fluorescence of GFP and fitness of His3.

A.10 Ablation Study on Initial State and Reward Modeling

Table 12 reports the effect of the initial state and reward. We set three experimental rewards: (1) a *dense* reward, defined as $r_t = f(s_t)$, (2) an *absolute* reward, defined as a binary value of $r_t = 1$, if $f(s_t) > r_{th}$ and 0 if otherwise (values for r_{th} are listed in Table 12), and (3) a *binary* reward, defined as a binary value of $r_t = 1$, if $f(s_t) > f(s_{t-1})$ and 0 if otherwise.

Starting from a state of low or high functionality, our framework optimizes performance relative to the baseline. The best performance is obtained when starting from a state of high functionality and training with an absolute reward. Our framework can generate novel sequences even when beginning with a high functionality value. Nonetheless, beginning from a state with low functionality, the trained policy does not produce designs with high functionality. This could mean that there may be a gap between regions with low functionality and regions with high functionality in the representation space that requires additional time steps to be explored in each episode.

Table 12: Ablation studies investigating the sampling of initial states and the reward modeling for the GFP dataset. The policy trained with absolute reward and starting from high initial states is used for comparisons in Tables 1 and 3.

Initial state	Reward	Performance	Novelty	Diversity
Low	Dense	1.856 ± 0.631	70%	8.032
	Absolute ($r_{th} = 1.8$)	1.855 ± 0.601	50%	5.653
	Binary	1.546 ± 0.271	100%	6.347
	Baseline	1.492 ± 0.008	-	5.426
High	Dense	3.448 ± 0.094	100%	5.700
	Absolute ($r_{th} = 3.3$)	3.531 ± 0.06	100%	6.311
	Binary	3.452 ± 0.081	95%	5.279
	Baseline	3.370 ± 0.013	-	4.858

A.11 Methodology to obtain the complete functionality landscape

Table 13: Details of the complete functionality landscape.

Figure	Task	Number of Representations	Sequences	Dimension reduction
Fig. 1 (a)	GFP	1.55M	1403	t-SNE
Fig. 1 (b)	GFP	1.17M	46	t-SNE
Fig. 1 (c)(d)	His3	6.43K	6434	t-SNE
Fig. 8	GFP	1.17M	46	PCA

The methodology to plot the Fig. 1 and Fig. 8 is detailed next. First, a range based on the representations obtained during the episode being plotted is defined. Then we decode the distinct sequences

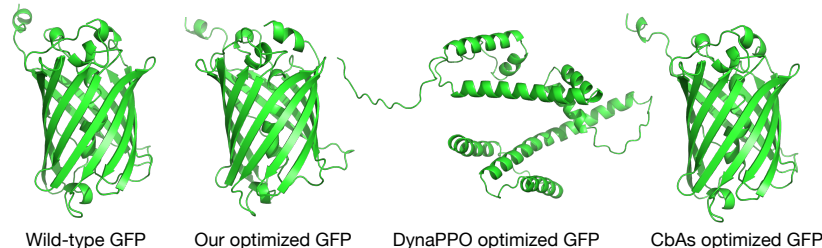


Figure 7: Structures predicted by AlphaFold2 for sequences optimized by the proposed method, DynaPPO, and CbAs for GFP.

from the large number of representations using the decoder. Table 13 shows the number of representations and sequences used to plot the complete functionality and fitness landscape. After this step, the reward is decoded for each sequence using the functionality predictor. To reduce the dimensionality, t-SNE (Van der Maaten & Hinton, 2008) is applied in Fig. 1 and Principal Component Analysis (PCA) (F.R.S., 1901) is applied in Fig 8 with the two principal components kept to create the local landscape.

A.12 AlphaFold2 predictions of optimized sequences

Fig. 7 visualizes the structure of the optimized sequence of GFP based on AlphaFold2 (Jumper et al., 2021). The sequences produced by our method and CbAS maintain the critical chromophore region that is known for emitting fluorescence in GFP and the beta sheets that secure the chromophore region. In contrast, DynaPPO-optimized sequences failed to preserve these essential structures of GFP. The different structures obtained by two reinforcement learning methods highlight the significance of state and action modeling in the design of biological sequences. Learning from a single-hot sequence encoding makes it difficult for an algorithm to identify crucial structural information. On the other hand, the latent vector trained by extracting information from a language model trained with millions of protein sequences can efficiently learn mutational effects and reflect protein structures, as shown in (Rives et al., 2021).

A.13 Policy ability to traverse local optima

We qualitatively evaluate our trained policy for the GFP by analyzing its ability to traverse local optima of the functionality landscape. The optimization process during one episode is shown in Fig. 8. Until the end of the episode, at timestep $t = 10$, the policy can traverse the landscape and maximize functionality efficiently. At timestep $t = 3$, it can escape local optima that do not trigger the conditions for the end of an episode. During timesteps $t = 7, 8, 9$, it can be seen that the policy is still maximizing the functionality metric until the end of the episode. Additional details and the methodology used to obtain the functionality landscape in Fig. 8 are explained in A.11.

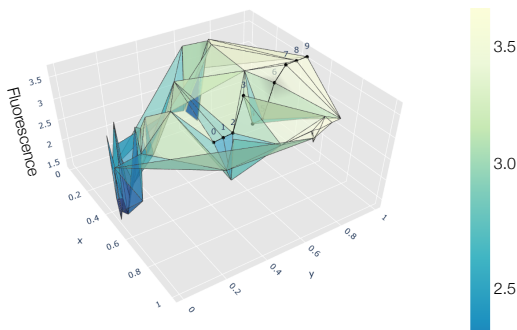


Figure 8: Optimization process performed by the trained policy during one episode for the GFP task. The x-axis and y-axis are the two principal components of the representation space calculated using Principal Component Analysis (F.R.S., 1901). The z-axis is the log-fluorescence intensity.